

## A NEW BRASILIAN ONOCOLUS

POR EL

PROF. DR. C. DE MELLO-LEITAO

National Museum of Natural History, Río de Janeiro

Mr. ROGER ARLÉ has collected at Gavea (Río de Janeiro) a very fine species of *Onocolus* (Thomisidae) which he drew as living and which is described below.

***Onocolus episcopus*, n. sp.** (Lám. I)

♀ 8,5 mm.—Abdomen 4,7×6,0 mm.

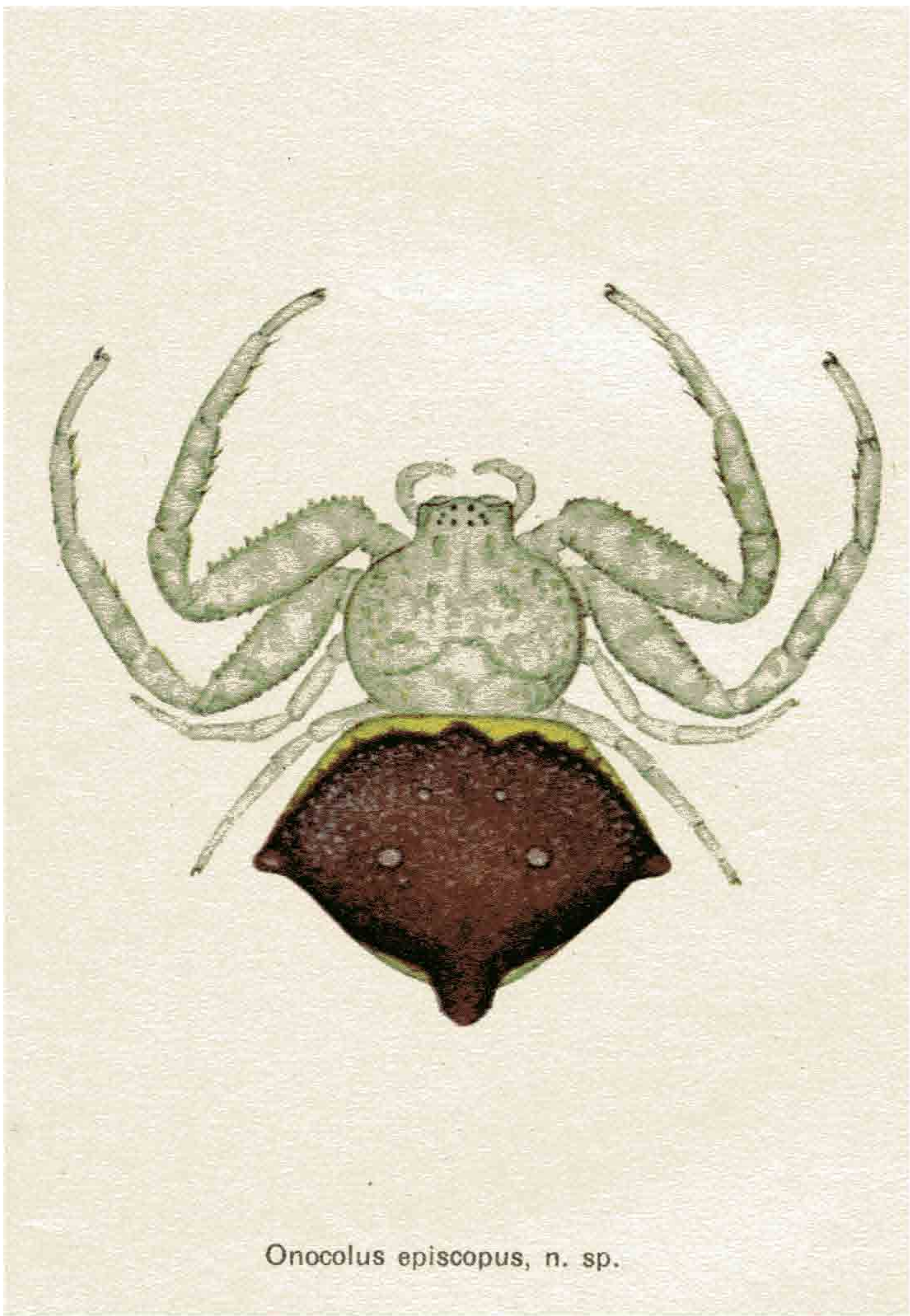
Legs.	Femur	Patella	Tibia	Protarsus	Tarsus	
I	3,5	1,5	2,0	2,0	1,2	10,2
II	3,5	1,5	2,5	2,0	1,2	10,7
III	2,0	1,0	1,0	0,8	0,6	5,4
IV	1,7	0,9	1,1	1,0	0,6	5,3

Carapace as large as long, abruptly narrowed at the ocular area, the latter low. Anterior eyes forming a line strongly curved backwards (recurved), central smaller and closer to each other, less than a diameter apart, than to the lateral, about two diameters from them. Posterior row of eyes straight, centrals larger further to each other about three diameters apart, than to the lateral, one and a half diameter from them. Central quadrangle longer than wider, narrowed forward. Clypeus equal to anterior eyes area. Legs I and II stouter; tibiae and protarsi with 2-2-2 spines beneath; femur with a row of sharp-printed teeth beneath. Tibiae III and IV unarmed. Abdomen wider than long, pentagonal, with lateral and posterioir median prominences stuated with little granulations.

Vulva consisting of a wide chitinous plate, with two round pits. Carapace and legs whitish, marbled in yellow (light green in living). Chelicers, labial plate and maxillae whitish. Abdomen red brown, finely reticulated, with four round blotches and bordered of blackish and yellow; uniformly whitish beneath. Type N.º 41770 (Museu Nacional, Río de Janeiro).







*Onocolus episcopus*, n. sp.